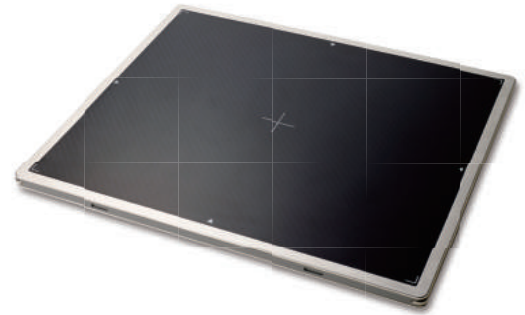


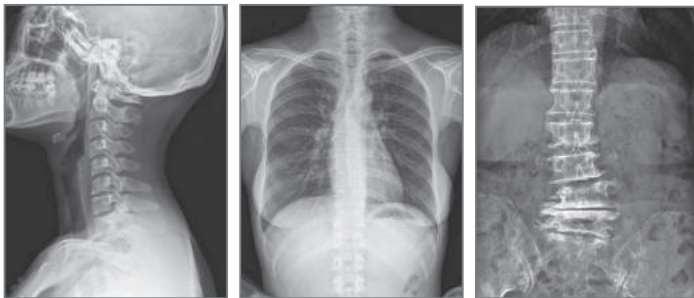
Features

- * Wide active area of 14" x 17"
- * High spatial resolution with 140um pixel array
- * Wi-Fi data transfer with dual band (2.4GHz and 5GHz)
- * Stable and reliable automatic exposure detection (Anytime™)
- * Direct communication with smart devices (Inside AP™)
- * Viewer software running on Windows™ OS (VXvue™)

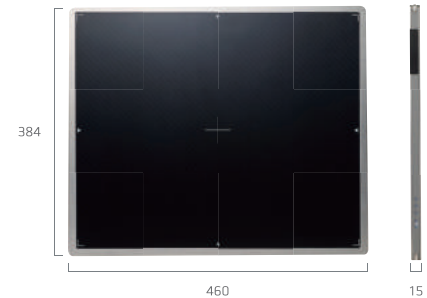


Configuration
 Detector FXRD-1417WA/B
 System Control Unit FXRS-03A
 Charger FXRC-01A
 Designed and manufactured by Vieworks in Korea

Acquired Images



Drawing



Technical Specification

Application	General radiography
Technology	Flat panel detector : a-Si TFT with PIN diode
Scintillator	CsI:Tl / Gd ₂ O ₂ S:Tb
Pixel Pitch	140um x 140um
Pixels	2,560 x 3,072 pixels
Image Size	14 x 17 inches (35 x 43cm)
A/D Conversion	14 bit
Grayscale	16,384 steps
X-ray voltage range	40 ~ 150kVp
X-ray generator Interface	Line trigger : DR Trigger Mode Auto trigger : AED (Automatic Exposure Detection) Mode
Wireless Interface	IEEE 802.11a/b/g/n (2.4GHz/5GHz dual band)
Dimensions	460 (W) x 384 (L) x 15 (T) mm
Weight	Approx. 3.3kg (GADOX) / 3.4kg (CsI)
Operating Environment	15 ~ 35°C, 30 ~ 85% RH (non-condensing)
Power	DC24V, 0.5A (Wired Mode) / 7.4V 4,000mAh Lithium Ion Polymer Battery

* Specifications are subject to change without prior notification.



Toll Free: (800) 859-6162
 Email: info@spectrumxray.com
 www.spectrummedimaging.com



Spectrum Medical Imaging Co.
 1721 Stewart Street
 Santa Monica, CA 90404

VIVIX-S 1417W

Wireless Portable Flat Panel Detector
for Digital Radiography



VIVIX-S Portable, Wireless is a Vieworks' 14" x 17" flat panel detector for general radiographic applications using its unique image processing system. With the size the same as that of CR cassette or films, it fits into almost all existing bucky trays. It is easy to acquire and instantly transmit images to the DICOM server through Wi-Fi network. The battery charger can recharge up to 3 batteries at the same time within 2 hours. An additional tether cable connection to the detector can also recharge the battery without removing it from the detector. Inside AP™ enables customers to take X-ray examinations directly to a computer or a laptop with Wi-Fi connection. In case of disconnection of Wi-Fi network between the detector and the image acquisition software, the detector can save up to 100 images at its on-board memory. After resuming communication with the detector, all saved images can be transmitted to the software.

